

\$699,900 - 1432 Latta Court, Edmonton

MLS® #E4431326

\$699,900

5 Bedroom, 3.50 Bathroom, 2,107 sqft

Single Family on 0.00 Acres

Leger, Edmonton, AB

Tucked away in a quiet cul-de-sac, this beautiful home sits on a massive southwest-facing pie-shaped lot—perfect for play and family BBQs on the oversized composite deck! Inside, enjoy a custom floorplan with a mudroom (washer/dryer moved here but secondary hook ups in the basement as well), a main floor office/den, and an open-concept island kitchen with quartz counters, stainless appliances, and corner pantry. The vaulted living room with custom gas fireplace is made for cozy nights in. Upstairs, the spacious primary retreat features dual vanities, a soaker tub, and a stand-up shower. Kids will love the huge bedrooms with a fun Jack & Jill bathroom! Fully finished basement offers a rec room/play area, 2 more bedrooms, and a bathroom. Central A/C, newer roof (2021), and thoughtful upgrades throughout including new closet organizers. Move in before summer starts and enjoy this warm, family-friendly community close to parks, schools, and shopping!

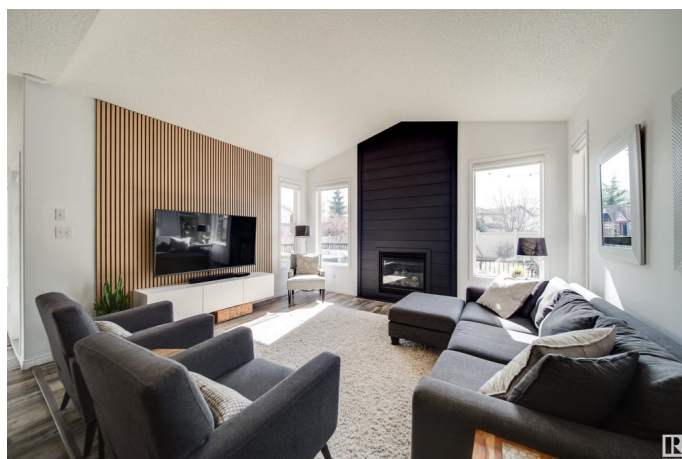
Built in 2004

Essential Information

MLS® # E4431326

Price \$699,900

Bedrooms 5



| | |
|----------------|------------------------|
| Bathrooms | 3.50 |
| Full Baths | 3 |
| Half Baths | 1 |
| Square Footage | 2,107 |
| Acres | 0.00 |
| Year Built | 2004 |
| Type | Single Family |
| Sub-Type | Detached Single Family |
| Style | 2 Storey |
| Status | Active |

Community Information

| | |
|-------------|------------------|
| Address | 1432 Latta Court |
| Area | Edmonton |
| Subdivision | Leger |
| City | Edmonton |
| County | ALBERTA |
| Province | AB |
| Postal Code | T6R 3N2 |

Amenities

| | |
|----------------|------------------------|
| Amenities | Air Conditioner, Deck |
| Parking Spaces | 4 |
| Parking | Double Garage Attached |

Interior

| | |
|-------------------|--|
| Interior Features | ensuite bathroom |
| Appliances | Air Conditioning-Central, Dishwasher-Built-In, Dryer, Garage Control, Garage Opener, Refrigerator, Stove-Electric, Washer, Window Coverings, TV Wall Mount |
| Heating | Forced Air-1, Natural Gas |
| Fireplace | Yes |
| Fireplaces | See Remarks |
| Stories | 3 |
| Has Basement | Yes |
| Basement | Full, Finished |

Exterior

| | |
|----------|--------------------|
| Exterior | Wood, Brick, Vinyl |
|----------|--------------------|

| | |
|-------------------|---|
| Exterior Features | Cul-De-Sac, Landscaped, Playground Nearby, Schools, Shopping Nearby |
| Roof | Asphalt Shingles |
| Construction | Wood, Brick, Vinyl |
| Foundation | Concrete Perimeter |

Additional Information

| | |
|----------------|------------------|
| Date Listed | April 17th, 2025 |
| Days on Market | 3 |
| Zoning | Zone 14 |

DATA IS DEEMED RELIABLE BUT IS NOT GUARANTEED ACCURATE BY THE REALTORS® ASSOCIATION OF EDMONTON. COPYRIGHT 2025 BY THE REALTORS® ASSOCIATION OF EDMONTON. ALL RIGHTS RESERVED.Trademarks are owned or controlled by the Canadian Real Estate Association (CREA) and identify real estate professionals who are members of CREA (REALTOR®, REALTORS®) and/or the quality of services they provide (MLS®, Multiple Listing Service®)

Listing information last updated on April 20th, 2025 at 11:32am MDT