

# \$1,900,000 - 4410 Wingfield Cape, Edmonton

MLS® #E4430216

**\$1,900,000**

6 Bedroom, 6.00 Bathroom, 3,732 sqft

Single Family on 0.00 Acres

Windermere, Edmonton, AB

Nestled in exclusive West Pointe, Windermere, backing onto a pond & greenspace this exquisite estate defines refined luxury! Designed to impress with great curb appeal. Step inside to the 2-storey living space that offers a wall of windows that provide lots of natural light & incredible views of the pond & greenspace. Step out onto the huge deck overlooking the pond; a great space to entertain or a tranquil place to unwind! The sleek Italian-inspired kitchen has a huge island, plenty of pull-outs, a built-in coffee bar & a separate spice kitchen. The dining area with linear fireplace is a generous size for entertaining. Every inch of your 5,400 sq. ft. residence exudes elegance, with seamless natural grey marble flooring on all 3 levels & in-floor heating. The home boasts 6 spacious bedrooms, 6 luxurious bathrooms, a bonus room, a home theatre room & a dedicated gym. The walkout basement offers added living space while maintaining the home's sophisticated style. Modern living with timeless elegance!

Built in 2021

## Essential Information

MLS® #	E4430216
Price	\$1,900,000



Bedrooms	6
Bathrooms	6.00
Full Baths	6
Square Footage	3,732
Acres	0.00
Year Built	2021
Type	Single Family
Sub-Type	Detached Single Family
Style	2 Storey
Status	Active

### **Community Information**

Address	4410 Wingfield Cape
Area	Edmonton
Subdivision	Windermere
City	Edmonton
County	ALBERTA
Province	AB
Postal Code	T6W 2E1

### **Amenities**

Amenities	Air Conditioner, Ceiling 10 ft., Closet Organizers, Patio, Vaulted Ceiling, Vinyl Windows, Walkout Basement
Parking	Triple Garage Attached

### **Interior**

Interior Features	ensuite bathroom
Appliances	Air Conditioning-Central, Dryer, Garage Control, Garage Opener, Hood Fan, Stove-Countertop Electric, Stove-Gas, Washer, Refrigerators-Two, Dishwasher-Two, Curtains and Blinds
Heating	Forced Air-2, Natural Gas
Fireplace	Yes
Fireplaces	See Remarks
Stories	2
Has Basement	Yes
Basement	Full, Finished

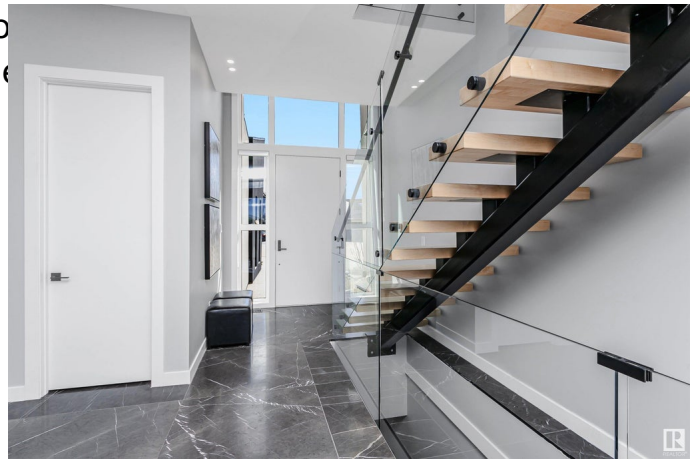
### **Exterior**

Exterior	Wood, Stucco
----------	--------------

Exterior Features Airport Nearby, Backs Onto  
Park/Reserve, Playground Ne  
Roof EPDM Membrane  
Construction Wood, Stucco  
Foundation Concrete Perimeter

### School Information

Elementary Constable Daniel Woodall  
Middle St John XXIII



### Additional Information

Date Listed April 10th, 2025  
Days on Market 5  
Zoning Zone 56  
HOA Fees 525  
HOA Fees Freq. Annually

DATA IS DEEMED RELIABLE BUT IS NOT GUARANTEED ACCURATE BY THE REALTORS® ASSOCIATION OF EDMONTON. COPYRIGHT 2025 BY THE REALTORS® ASSOCIATION OF EDMONTON. ALL RIGHTS RESERVED. Trademarks are owned or controlled by the Canadian Real Estate Association (CREA) and identify real estate professionals who are members of CREA (REALTOR®, REALTORS®) and/or the quality of services they provide (MLS®, Multiple Listing Service®)

Listing information last updated on April 15th, 2025 at 6:02am MDT