

\$799,900 - 2021 112a Street, Edmonton

MLS® #E4429794

\$799,900

4 Bedroom, 3.50 Bathroom, 2,174 sqft

Single Family on 0.00 Acres

Skyrattler, Edmonton, AB

Fully renovated 2200sf home across the street from S kyrattler Park & 2 blocks from Blackmud Creek Ravine! Gorgeous finishings throughout. The main floor features white oak engineered hardwood & 2 living spaces - a front room with vaulted shiplap ceilings, chandeliers & a wood burning fireplace plus a cozy back family room with a gas fireplace & patio door out to the composite deck & private yard. The kitchen is incredible - big, bright and white! Quartz counters including a massive waterfall island with cabinets on both sides, floating shelves surrounded by artisan tile backsplash, 48" side by side fridge/freezer, induction range with feature hood. Off the garage is a nice boot room with a bench & closet, 2 piece bath & laundry area. Upstairs there is a loft & 3 large bedrooms, 2 baths. The basement is fully finished with a beautiful rec room with built-in cabinets, 4th bedroom, 3rd full bath & a bonus space that could be gym, office, theatre room... Enormous heated triple garage with water & drain!

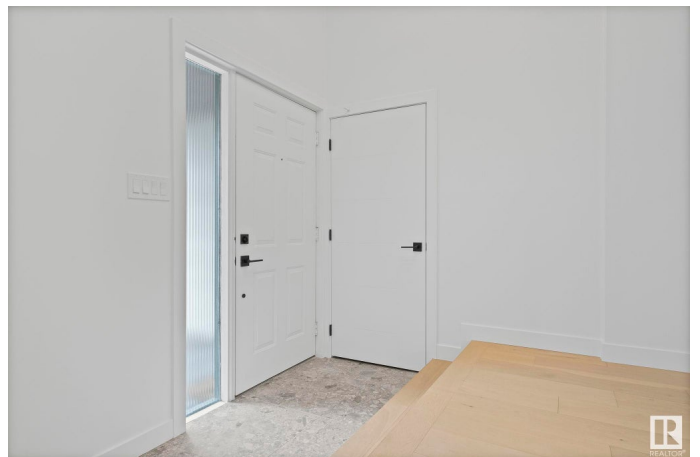
Built in 1980

Essential Information

MLS® # E4429794

Price \$799,900

Bedrooms 4



Bathrooms	3.50
Full Baths	3
Half Baths	1
Square Footage	2,174
Acres	0.00
Year Built	1980
Type	Single Family
Sub-Type	Detached Single Family
Style	2 Storey
Status	Active

Community Information

Address	2021 112a Street
Area	Edmonton
Subdivision	Skyrattler
City	Edmonton
County	ALBERTA
Province	AB
Postal Code	T6J 4V5

Amenities

Amenities	Closet Organizers, Deck, Fire Pit, Vaulted Ceiling, Vinyl Windows
Parking	Tandem, Triple Garage Attached

Interior

Interior Features	ensuite bathroom
Appliances	Dishwasher-Built-In, Dryer, Freezer, Oven-Microwave, Refrigerator, Stove-Electric, Washer
Heating	Forced Air-2, Natural Gas
Fireplace	Yes
Fireplaces	Brick Facing
Stories	3
Has Basement	Yes
Basement	Full, Finished

Exterior

Exterior	Wood, Brick, Stucco
Exterior Features	Fenced, Landscaped
Roof	Asphalt Shingles

Construction	Wood, Brick, Stucco
Foundation	Concrete Perimeter

School Information

Elementary	Keeheewin
Middle	D.S. Mackenzie
High	Harry Ainlay

Additional Information

Date Listed	April 9th, 2025
Days on Market	4
Zoning	Zone 16

DATA IS DEEMED RELIABLE BUT IS NOT GUARANTEED ACCURATE BY THE REALTORS® ASSOCIATION OF EDMONTON. COPYRIGHT 2025 BY THE REALTORS® ASSOCIATION OF EDMONTON. ALL RIGHTS RESERVED. Trademarks are owned or controlled by the Canadian Real Estate Association (CREA) and identify real estate professionals who are members of CREA (REALTOR®, REALTORS®) and/or the quality of services they provide (MLS®, Multiple Listing Service®)

Listing information last updated on April 13th, 2025 at 6:47pm MDT