

\$977,777 - 1108 150 Avenue, Edmonton

MLS® #E4429345

\$977,777

7 Bedroom, 5.00 Bathroom, 2,573 sqft

Single Family on 0.00 Acres

Fraser, Edmonton, AB

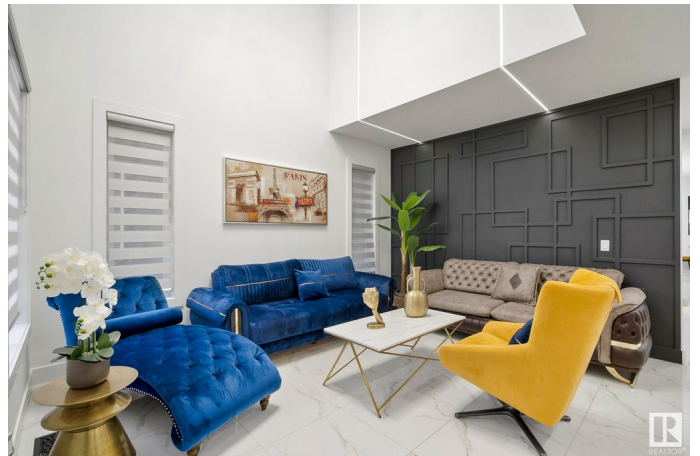
Step into the perfect fusion of modern living & luxury in this 7-bed, 5-bath home spanning 3500 sq ft. Designed for space & functionality, it suits both growing families & hosting guests. The main floor features vaulted ceilings that open to below in the living room w/ gas F/P & feature wall. The sleek & stylish kitchen is adorned w/ quartz counters, huge island & a walk-in butler's pantry equipped w/ a gas range oven. The primary bedroom, a sanctuary of comfort & style, complete w/ an ensuite that features dual sinks, a soaker tub, a separate shower, & a generously sized walk-in closet. The basement unveils a SECONDARY suite w/ 2 bedrooms, a full kitchen, a massive rec room, & an additional laundry room. Additional features are Black windows, exposed aggregate driveway and double attached garage. Located just off the Anthony Henday, it ensures quick access to major routes for effortless commutes. This meticulously designed home offers not just a living space but a lifestyle of luxury, space & modern ease

Built in 2022

Essential Information

MLS® # E4429345

Price \$977,777



Bedrooms	7
Bathrooms	5.00
Full Baths	5
Square Footage	2,573
Acres	0.00
Year Built	2022
Type	Single Family
Sub-Type	Detached Single Family
Style	2 Storey
Status	Active

Community Information

Address	1108 150 Avenue
Area	Edmonton
Subdivision	Fraser
City	Edmonton
County	ALBERTA
Province	AB
Postal Code	T5Y 4C1

Amenities

Amenities	Ceiling 9 ft., Deck, See Remarks, HRV System
Parking	Double Garage Attached

Interior

Interior Features	ensuite bathroom
Appliances	Garage Control, Garage Opener, Hood Fan, Oven-Built-In, Stove-Countertop Electric, Stove-Electric, Stove-Gas, Window Coverings, Wine/Beverage Cooler, Dryer-Two, Refrigerators-Two, Washers-Two, Dishwasher-Two
Heating	Forced Air-1, Natural Gas
Stories	3
Has Basement	Yes
Basement	Full, Finished

Exterior

Exterior	Wood, Stucco
Exterior Features	Golf Nearby, Shopping Nearby, See Remarks
Roof	Asphalt Shingles

Construction Wood, Stucco
Foundation Concrete Perimeter

Additional Information

Date Listed April 5th, 2025
Days on Market 8
Zoning Zone 35

DATA IS DEEMED RELIABLE BUT IS NOT GUARANTEED ACCURATE BY THE REALTORS® ASSOCIATION OF EDMONTON. COPYRIGHT 2025 BY THE REALTORS® ASSOCIATION OF EDMONTON. ALL RIGHTS RESERVED. Trademarks are owned or controlled by the Canadian Real Estate Association (CREA) and identify real estate professionals who are members of CREA (REALTOR®, REALTORS®) and/or the quality of services they provide (MLS®, Multiple Listing Service®)

Listing information last updated on April 13th, 2025 at 9:17pm MDT