

Courtesy Of Jeff D Jackson Of Bode

\$393,188 - 31 710 Mattson Drive, Edmonton

MLS® #E4428285

\$393,188

3 Bedroom, 2.50 Bathroom, 1,435 sqft
Single Family on 0.00 Acres

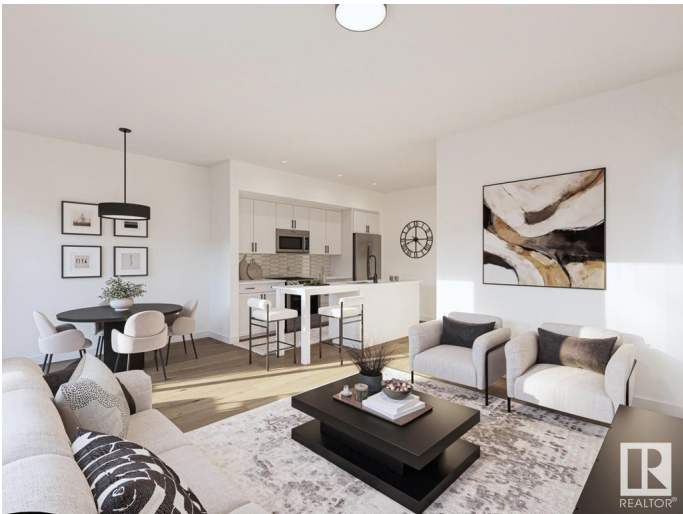
Mattson, Edmonton, AB

Welcome to The Rise at Mattson, Parkwood's latest multi-family project! These attached-garage townhomes offer farmhouse vibes with a modern twist in Southeast Edmonton's highly sought-after Mattson community. Unit 31 features our single-attached garage Solstice model, which includes 1,359 square feet of living space with an option to develop the basement. Renderings illustrate the end unit layout for visual reference only. SOLSTICE FEATURES: Coastal Contemporary Exterior Separate Side Entry Rear deck Chic Entertainerâ€™s Kitchen Cozy Dining Nook + Living Room Spacious Loft + 3 Bedrooms Upstairs 3-piece Primary Ensuite + Walk-in Closet This 57-unit project features multiple units at different stages of construction. Photos are representative.

Built in 2025

Essential Information

MLS® #	E4428285
Price	\$393,188
Bedrooms	3
Bathrooms	2.50
Full Baths	2
Half Baths	1
Square Footage	1,435



Acres	0.00
Year Built	2025
Type	Single Family
Sub-Type	Residential Attached
Style	2 Storey
Status	Active

Community Information

Address	31 710 Mattson Drive
Area	Edmonton
Subdivision	Mattson
City	Edmonton
County	ALBERTA
Province	AB
Postal Code	T6H 3H8

Amenities

Amenities	See Remarks
Parking Spaces	1
Parking	Single Garage Attached

Interior

Interior Features	ensuite bathroom
Appliances	Microwave Hood Fan
Heating	Forced Air-1, Natural Gas
Stories	2
Has Basement	Yes
Basement	Full, Unfinished

Exterior

Exterior	Wood, Fiber Cement, Vinyl
Exterior Features	Low Maintenance Landscape, Playground Nearby, Schools, Shopping Nearby
Roof	Asphalt Shingles
Construction	Wood, Fiber Cement, Vinyl
Foundation	Concrete Perimeter

Additional Information

Date Listed	March 31st, 2025
-------------	------------------

Days on Market	15
Zoning	Zone 53
Condo Fee	\$100

DATA IS DEEMED RELIABLE BUT IS NOT GUARANTEED ACCURATE BY THE REALTORS® ASSOCIATION OF EDMONTON. COPYRIGHT 2025 BY THE REALTORS® ASSOCIATION OF EDMONTON. ALL RIGHTS RESERVED. Trademarks are owned or controlled by the Canadian Real Estate Association (CREA) and identify real estate professionals who are members of CREA (REALTOR®, REALTORS®) and/or the quality of services they provide (MLS®, Multiple Listing Service®)

Listing information last updated on April 15th, 2025 at 9:02am MDT