

\$588,800 - 1531 Malone Close, Edmonton

MLS® #E4428182

\$588,800

3 Bedroom, 2.50 Bathroom, 1,893 sqft
Single Family on 0.00 Acres

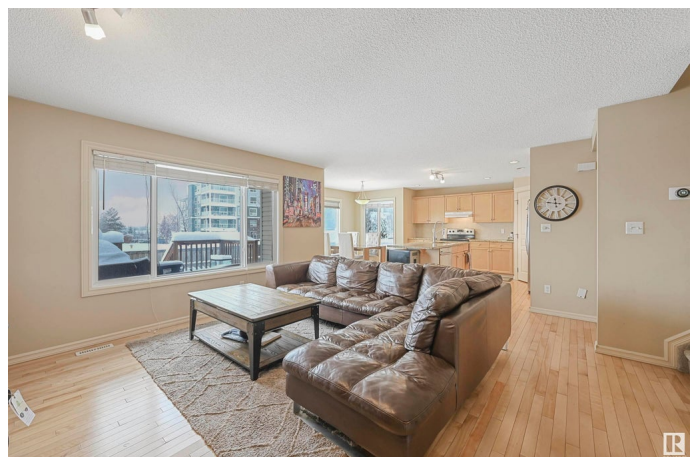
Magrath Heights, Edmonton, AB

Welcome to desirable Magrath Manors and this lovely Landmark Built 1,893sf 2-Storey home situated on a large pie shaped yard. This open concept main floor featuring a spacious great room with a gas F/P. The kitchen has ample counter space, SS appliances, granite countertops, large kitchen nook, 2 pc bath, laundry & maple hardwood floors. The upper level features include a large vaulted bonus room, 3 total bedrooms, 4-pce bath & plenty of storage. The primary bedroom features a large walk-in closet, 4pc ensuite w/ corner soaker tub & oversized separate shower. Other features include over-sized double attached garage (21.5' wide) & is roughed in for central vac. You're located steps to the Magrath Park, shopping, restaurants, city transit, the Anthony Henday & Whitemud Drive. Don't miss out on this beautiful home in one of Edmonton's most desirable neighbourhoods!

Built in 2007

Essential Information

MLS® #	E4428182
Price	\$588,800
Bedrooms	3
Bathrooms	2.50
Full Baths	2



Half Baths	1
Square Footage	1,893
Acres	0.00
Year Built	2007
Type	Single Family
Sub-Type	Residential Attached
Style	2 Storey
Status	Active

Community Information

Address	1531 Malone Close
Area	Edmonton
Subdivision	Magrath Heights
City	Edmonton
County	ALBERTA
Province	AB
Postal Code	T6R 0H3

Amenities

Amenities	Ceiling 9 ft., Deck
Parking	Double Garage Attached

Interior

Interior Features	ensuite bathroom
Appliances	Dishwasher-Built-In, Dryer, Hood Fan, Oven-Microwave, Refrigerator, Stove-Electric, Washer, Window Coverings, See Remarks
Heating	Forced Air-1, Natural Gas
Fireplace	Yes
Fireplaces	Mantel
Stories	2
Has Basement	Yes
Basement	Full, Unfinished

Exterior

Exterior	Wood, Stone, Vinyl
Exterior Features	Airport Nearby, Cul-De-Sac, Fenced, Playground Nearby, Public Transportation, Schools, Shopping Nearby
Roof	Asphalt Shingles
Construction	Wood, Stone, Vinyl

Foundation Concrete Perimeter

School Information

Elementary Nellie Carlson/Archbishop

Middle Nellie Carlson/Archbishop

High Lillian Osborne/MMM

Additional Information

Date Listed March 29th, 2025

Days on Market 8

Zoning Zone 14

HOA Fees 382.5

HOA Fees Freq. Annually

DATA IS DEEMED RELIABLE BUT IS NOT GUARANTEED ACCURATE BY THE REALTORS® ASSOCIATION OF EDMONTON. COPYRIGHT 2025 BY THE REALTORS® ASSOCIATION OF EDMONTON. ALL RIGHTS RESERVED. Trademarks are owned or controlled by the Canadian Real Estate Association (CREA) and identify real estate professionals who are members of CREA (REALTOR®, REALTORS®) and/or the quality of services they provide (MLS®, Multiple Listing Service®)

Listing information last updated on April 6th, 2025 at 1:17am MDT