

Courtesy Of Greg Steele Of RE/MAX Excellence

\$529,900 - 10822 134 Street, Edmonton

MLS® #E4428047

\$529,900

4 Bedroom, 1.50 Bathroom, 1,099 sqft

Single Family on 0.00 Acres

North Glenora, Edmonton, AB

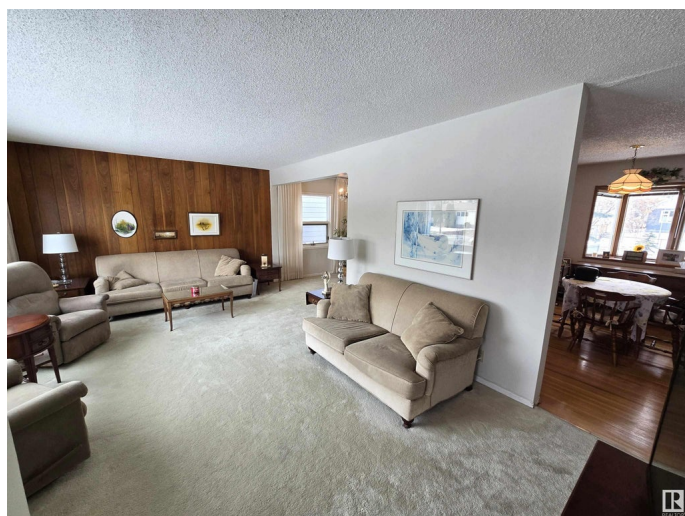
A Rare Find in an amazing Location. Original Owner, Charming, Immaculate Bungalow situated on a matured tree lined street in the heart of North Glenora. The main floor offers a bright, inviting spacious living room with large picture window, flowing into the dining room perfect for those family gatherings. Large breakfast nook with hardwood floors & bay window, adject to the the sizeable kitchen with ample wood cabinetry and counter space. Generous Primary Bedroom, a well-sized Secondary Bedroom & 4 pc bath. The fully finished basement is complete with a vast Rec Room, 2 additional bedrooms, half bath & laundry room. Step outside to a massive fully fenced, south facing backyard, perfect for entertaining, with a large deck, grassed area for the kids or pets to play, & access to the oversized single detached garage. Conveniently located close to Westmount Shopping Centre, Grocery, Medical, Banks, Restaurants, Shops, Woodcroft Library, public transportation, schools & more! Minutes from Groat Rd & Downtown.

Built in 1952

Essential Information

MLS® # E4428047

Price \$529,900



Bedrooms	4
Bathrooms	1.50
Full Baths	1
Half Baths	1
Square Footage	1,099
Acres	0.00
Year Built	1952
Type	Single Family
Sub-Type	Detached Single Family
Style	Bungalow
Status	Active

Community Information

Address	10822 134 Street
Area	Edmonton
Subdivision	North Glenora
City	Edmonton
County	ALBERTA
Province	AB
Postal Code	T5M 1H8

Amenities

Amenities	Deck, See Remarks
Parking Spaces	3
Parking	Over Sized, Single Garage Detached

Interior

Appliances	Dishwasher-Built-In, Dryer, Garage Control, Garage Opener, Refrigerator, Stove-Electric, Washer, Window Coverings
Heating	Forced Air-1, Natural Gas
Stories	2
Has Basement	Yes
Basement	Full, Finished

Exterior

Exterior	Wood, Brick, Vinyl
Exterior Features	Back Lane, Fenced, Flat Site, Landscaped, Paved Lane, Picnic Area, Playground Nearby, Public Swimming Pool, Public Transportation, Schools, Shopping Nearby

Roof	Asphalt Shingles
Construction	Wood, Brick, Vinyl
Foundation	Concrete Perimeter

School Information

Elementary	St. Vincent/Holy Cross
Middle	St Mark/Westmount
High	Ross Sheppard/Macdonald

Additional Information

Date Listed	March 27th, 2025
Days on Market	13
Zoning	Zone 07

DATA IS DEEMED RELIABLE BUT IS NOT GUARANTEED ACCURATE BY THE REALTORS® ASSOCIATION OF EDMONTON. COPYRIGHT 2025 BY THE REALTORS® ASSOCIATION OF EDMONTON. ALL RIGHTS RESERVED. Trademarks are owned or controlled by the Canadian Real Estate Association (CREA) and identify real estate professionals who are members of CREA (REALTOR®, REALTORS®) and/or the quality of services they provide (MLS®, Multiple Listing Service®)

Listing information last updated on April 8th, 2025 at 10:17pm MDT