

Courtesy Of Jean A Sills Of MaxWell Challenge Realty

\$299,000 - 5458 38a Avenue, Edmonton

MLS® #E4427286

\$299,000

3 Bedroom, 1.50 Bathroom, 1,248 sqft
Condo / Townhouse on 0.00 Acres

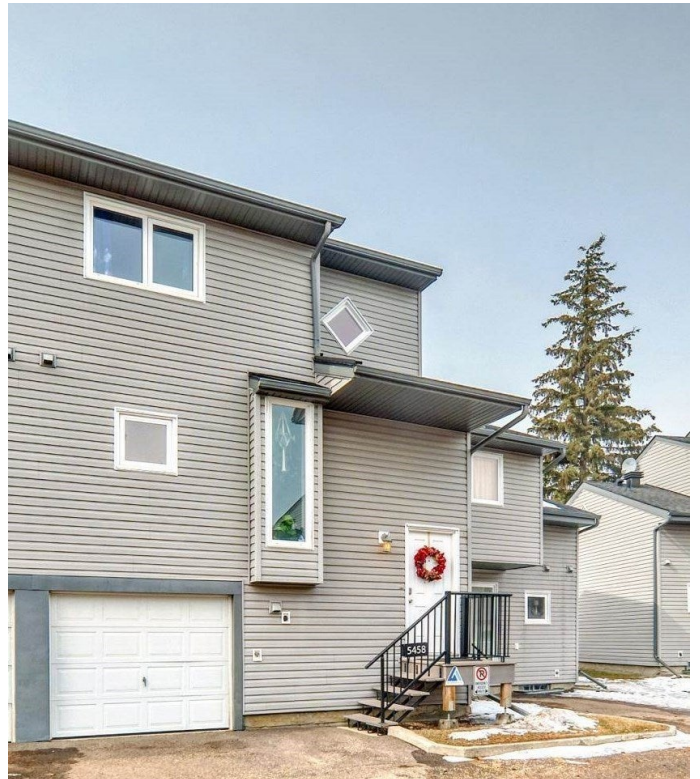
Greenview (Edmonton), Edmonton, AB

The work is all done! All you need to do is enjoy! Extensive renovations throughout starting with the new kitchen. Glistening cabinets (complete with pantry cabinet) are complemented by sought-after wood countertops, new sink & faucet, stainless-steel appliances & updated backsplash - all in the past 2 years. Fresh hardwood in the dining room and living areas as well as fresh paint throughout the well-maintained home. Note the decorative fireplace and its new wood finish - so NOW! Be impressed with new stair railings and new lighting throughout the home. The two bathrooms have been gutted and refinished - with style and functionality. Three spacious bedrooms, also freshly painted, and new flooring. New inside doorways throughout; new hardware, too! What is left to talk about? The oversized garage, of course! No more scraping for you! All this is quietly tucked away in sought-after Greenview - minutes walk to schools, Grey Nuns, LRT and golfing. Make it yours!

Built in 1979

Essential Information

MLS® #	E4427286
Price	\$299,000
Bedrooms	3



Bathrooms	1.50
Full Baths	1
Half Baths	1
Square Footage	1,248
Acres	0.00
Year Built	1979
Type	Condo / Townhouse
Sub-Type	Townhouse
Style	2 Storey
Status	Active

Community Information

Address	5458 38a Avenue
Area	Edmonton
Subdivision	Greenview (Edmonton)
City	Edmonton
County	ALBERTA
Province	AB
Postal Code	T6L 6K4

Amenities

Amenities	Off Street Parking, Carbon Monoxide Detectors, Deck, Detectors Smoke, Front Porch, Hot Water Natural Gas, Low Flow Faucets/Shower, Low Flw/Dual Flush Toilet, No Animal Home, No Smoking Home, Parking-Visitor, Vinyl Windows, See Remarks
Parking Spaces	2
Parking	Single Garage Attached, Stall

Interior

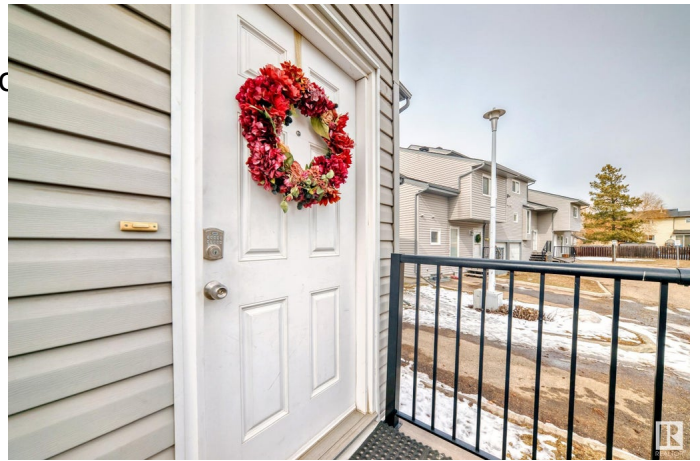
Appliances	Dishwasher-Built-In, Dryer, Fan-Ceiling, Hood Fan, Refrigerator, Stove-Electric, Washer
Heating	Forced Air-1, Natural Gas
Fireplace	Yes
Fireplaces	See Remarks
Stories	2
Has Basement	Yes
Basement	Full, Unfinished

Exterior

Exterior Wood, Vinyl
Exterior Features Flat Site, Public Transportatio
Roof Asphalt Shingles
Construction Wood, Vinyl
Foundation Concrete Perimeter

School Information

Elementary Greenview/John Paul I
Middle Edith Rogers/St. Hilda
High WP Wagner/Holy Trinity



Additional Information

Date Listed March 25th, 2025
Days on Market 20
Zoning Zone 29
Condo Fee \$344

DATA IS DEEMED RELIABLE BUT IS NOT GUARANTEED ACCURATE BY THE REALTORS® ASSOCIATION OF EDMONTON. COPYRIGHT 2025 BY THE REALTORS® ASSOCIATION OF EDMONTON. ALL RIGHTS RESERVED. Trademarks are owned or controlled by the Canadian Real Estate Association (CREA) and identify real estate professionals who are members of CREA (REALTOR®, REALTORS®) and/or the quality of services they provide (MLS®, Multiple Listing Service®)

Listing information last updated on April 14th, 2025 at 12:17am MDT