

Courtesy Of Peter Myrlak Of 1st Choice Realty Edmonton Ltd.

# \$161,900 - 301 5212 48 Avenue, Wetaskiwin

MLS® #E4426009

## \$161,900

1 Bedroom, 1.00 Bathroom, 691 sqft  
Condo / Townhouse on 0.00 Acres

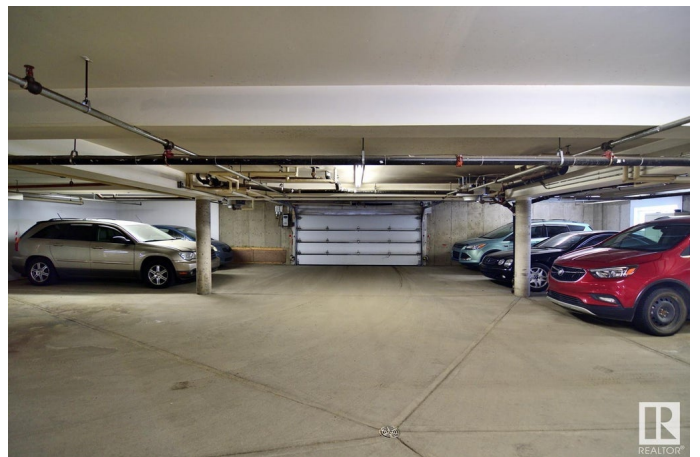
Wetaskiwin, Wetaskiwin, AB

Beautifully renovated Condo in Wetaskiwin at Elmwood Court, 55+, Top Floor, Furnished, All Appliances, Elevator, Underground Heated Parking. In Suite Laundry. Custom Cabinetry with Soft Close Cabinets, Drawers and Corner Accent Shelving. Luxury Vinyl Plank Flooring throughout and Italian Styled Mosaic Lino in Bath. Open concept kitchen/dining/living space. Custom stain glass French doors leading into the bedroom, Large closet with classy mirror doors. 2 way entrance to 4pc bathroom with elegant pedestal sink. Custom laundry room with built-in cabinetry plus open shelving. South facing large balcony with tree top views, and room for a patio garden. Enclosed storage for all the extras. Conveniently located close to Grocery Stores, Banks, Restaurants, Pharmacies and Dr. Offices. Perfect size unit for easy and affordable living. Low Condo Fees.

Built in 1994

### Essential Information

MLS® #	E4426009
Price	\$161,900
Bedrooms	1
Bathrooms	1.00
Full Baths	1
Square Footage	691



Acres	0.00
Year Built	1994
Type	Condo / Townhouse
Sub-Type	Lowrise Apartment
Style	Single Level Apartment
Status	Active

### **Community Information**

Address	301 5212 48 Avenue
Area	Wetaskiwin
Subdivision	Wetaskiwin
City	Wetaskiwin
County	ALBERTA
Province	AB
Postal Code	T9N 0N3

### **Amenities**

Amenities	Air Conditioner, No Animal Home, No Smoking Home, Parking-Visitor, Secured Parking, Vinyl Windows
Parking Spaces	1
Parking	Heated, Underground

### **Interior**

Appliances	Air Conditioner-Window, Dishwasher-Built-In, Dryer, Hood Fan, Oven-Microwave, Refrigerator, Stove-Electric, Washer, Window Coverings
Heating	Baseboard, Hot Water, Natural Gas
# of Stories	3
Stories	1
Has Basement	Yes
Basement	None, No Basement

### **Exterior**

Exterior	Wood, Brick, Vinyl
Exterior Features	Flat Site, Landscaped, Shopping Nearby
Roof	Asphalt Shingles
Construction	Wood, Brick, Vinyl
Foundation	Concrete Perimeter

### **Additional Information**

Date Listed	March 16th, 2025
Days on Market	30
Zoning	Zone 80
Condo Fee	\$269

DATA IS DEEMED RELIABLE BUT IS NOT GUARANTEED ACCURATE BY THE REALTORS® ASSOCIATION OF EDMONTON. COPYRIGHT 2025 BY THE REALTORS® ASSOCIATION OF EDMONTON. ALL RIGHTS RESERVED. Trademarks are owned or controlled by the Canadian Real Estate Association (CREA) and identify real estate professionals who are members of CREA (REALTOR®, REALTORS®) and/or the quality of services they provide (MLS®, Multiple Listing Service®)

Listing information last updated on April 15th, 2025 at 12:17am MDT