

Courtesy Of Monique N Balie Of Sable Realty

## \$789,900 - 16225 32 Avenue, Edmonton

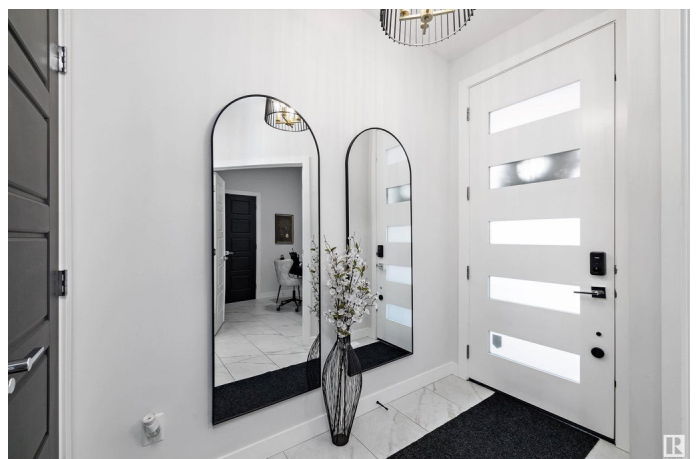
MLS® #E4424511

**\$789,900**

4 Bedroom, 4.00 Bathroom, 2,155 sqft  
Single Family on 0.00 Acres

Glenridding Ravine, Edmonton, AB

Welcome to Elegance! This stylish 4-bedroom home in Ridgecrest is filled with high-end finishes and thoughtful details. The main floor features a bedroom/den, 3-piece bath, and a spacious mudroom connecting to a walk-through pantry with built-in shelving. The gourmet kitchen stuns with sleek black cabinets, gold hardware, black SS appliances, and an extended marble quartz countertop and island. The open dining area offers a breathtaking south-facing pond view. A floor-to-ceiling custom built-out with LED surround & 100â€• fireplace makes the open-to-below living space a showstopper. The glass staircase with step lights leads to a second floor featuring a bonus room, 3 bedroomsâ€• each with a private ensuiteâ€• and a laundry room. The primary suite boasts a built-out w/ LED surround, fireplace, private balcony, 5-piece bath, and custom walk-in closet. Additional highlights: adjustable lighting throughout, garage drain, walkout basement with 9ft ceilings, stamped concrete pad, large deck, and full fencing and more!



Built in 2021

### Essential Information

MLS® #	E4424511
Price	\$789,900

Bedrooms	4
Bathrooms	4.00
Full Baths	4
Square Footage	2,155
Acres	0.00
Year Built	2021
Type	Single Family
Sub-Type	Detached Single Family
Style	2 Storey
Status	Active

### Community Information

Address	16225 32 Avenue
Area	Edmonton
Subdivision	Glenridding Ravine
City	Edmonton
County	ALBERTA
Province	AB
Postal Code	T6W 4P2

### Amenities

Amenities Carbon Monoxide Detectors, Ceiling 10 ft., Ceiling 9 ft., Closet Organizers, Deck, Hot Water Tankless, Low Flw/Dual Flush Toilet, No Smoking Home, Patio, Secured Parking, Storage-In-Suite, Walkout Basement, See Remarks, Natural Gas BBQ Hookup, 9 ft. Basement Ceiling

Parking Spaces	4
Parking	Double Garage Attached

### Interior

Interior Features	ensuite bathroom
Appliances	Dishwasher-Built-In, Garage Opener, Hood Fan, Oven-Built-In, Oven-Microwave, Refrigerator, Stacked Washer/Dryer, Stove-Countertop Electric, Window Coverings, See Remarks
Heating	Forced Air-1, Natural Gas
Fireplace	Yes
Fireplaces	Remote Control, Wall Mount, See Remarks
Stories	2
Has Basement	Yes

Basement Full, Unfinished

## Exterior

Exterior Wood, Brick, Vinyl

Exterior Features Airport Nearby, Cul-De-Sac, Fenced, Low Maintenance Landscape, Playground Nearby, Schools, Shopping Nearby, Sloping Lot, Stream/Pond, See Remarks

Roof Asphalt Shingles

Construction Wood, Brick, Vinyl

Foundation Concrete Perimeter

## School Information

Elementary Joey Moss

Middle Joey Moss

High Dr. Anne Anderson

## Additional Information

Date Listed March 7th, 2025

Days on Market 30

Zoning Zone 56

DATA IS DEEMED RELIABLE BUT IS NOT GUARANTEED ACCURATE BY THE REALTORS® ASSOCIATION OF EDMONTON. COPYRIGHT 2025 BY THE REALTORS® ASSOCIATION OF EDMONTON. ALL RIGHTS RESERVED. Trademarks are owned or controlled by the Canadian Real Estate Association (CREA) and identify real estate professionals who are members of CREA (REALTOR®, REALTORS®) and/or the quality of services they provide (MLS®, Multiple Listing Service®)

Listing information last updated on April 6th, 2025 at 12:02am MDT