

\$927,000 - 6903 Johnnie Caine Way, Edmonton

MLS® #E4422406

\$927,000

3 Bedroom, 2.50 Bathroom, 2,443 sqft
Single Family on 0.00 Acres

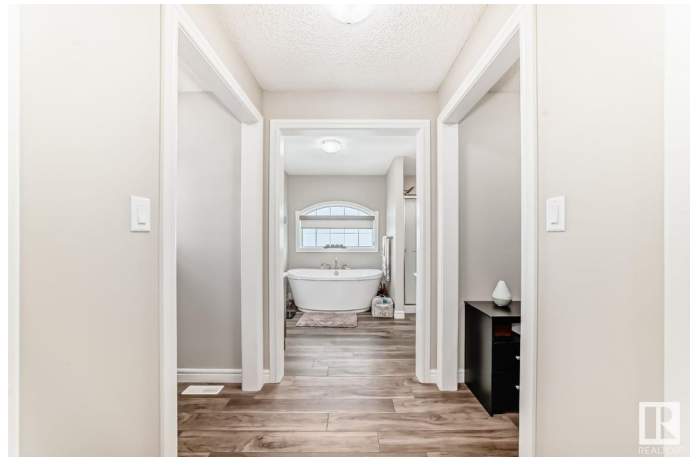
Griesbach, Edmonton, AB

Visit the Listing Brokerage (and/or listing REALTOR®) website to obtain add'l information. Stunning 2-Story Home with Garage Suite in Griesbach Village. This well-maintained home features 3 spacious bedrooms and 3 bathrooms. The heart of the home is a large, open-concept living area with a bright and inviting living room. The adjacent office space offers a quiet area for work or study. The kitchen is a chef's dream, complete with ample cabinet space, an island with stunning marble countertops, and modern appliances. Upstairs, you'll find generously sized bedrooms, including a master suite with a 5 pc. en-suite bathroom for added convenience and privacy. Step outside onto the private balcony, facing east, where you can enjoy the peaceful views towards the lake. Adding incredible value, this home includes a legal garage suite. This 578 sq. ft. one bedroom suite above the garage is currently rented, providing a great opportunity for rental income to help with the mortgage.

Built in 2018

Essential Information

MLS® #	E4422406
Price	\$927,000
Bedrooms	3



Bathrooms	2.50
Full Baths	2
Half Baths	1
Square Footage	2,443
Acres	0.00
Year Built	2018
Type	Single Family
Sub-Type	Detached Single Family
Style	2 Storey
Status	Active

Community Information

Address	6903 Johnnie Caine Way
Area	Edmonton
Subdivision	Griesbach
City	Edmonton
County	ALBERTA
Province	AB
Postal Code	T5E 6W4

Amenities

Amenities	Ceiling 9 ft., Deck, Detectors Smoke
Parking Spaces	4
Parking	Double Garage Detached, See Remarks

Interior

Interior Features	ensuite bathroom
Appliances	See Remarks
Heating	Forced Air-2, Natural Gas
Stories	2
Has Basement	Yes
Basement	Full, Unfinished

Exterior

Exterior	Wood, Vinyl
Exterior Features	Back Lane, Corner Lot, Fenced, Hillside, Recreation Use, Schools, Shopping Nearby, View Lake
Roof	Asphalt Shingles
Construction	Wood, Vinyl

Foundation Concrete Perimeter

Additional Information

Date Listed February 21st, 2025

Days on Market 43

Zoning Zone 27

DATA IS DEEMED RELIABLE BUT IS NOT GUARANTEED ACCURATE BY THE REALTORS® ASSOCIATION OF EDMONTON. COPYRIGHT 2025 BY THE REALTORS® ASSOCIATION OF EDMONTON. ALL RIGHTS RESERVED. Trademarks are owned or controlled by the Canadian Real Estate Association (CREA) and identify real estate professionals who are members of CREA (REALTOR®, REALTORS®) and/or the quality of services they provide (MLS®, Multiple Listing Service®)

Listing information last updated on April 5th, 2025 at 7:02am MDT